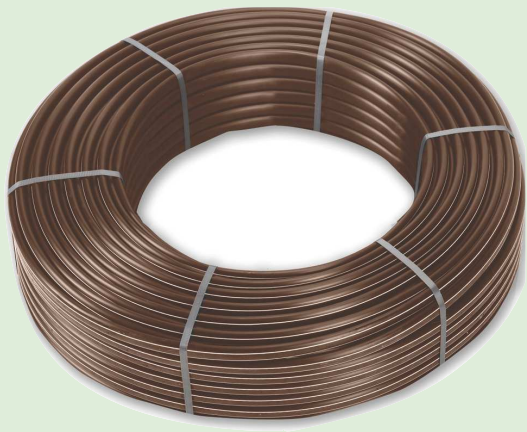
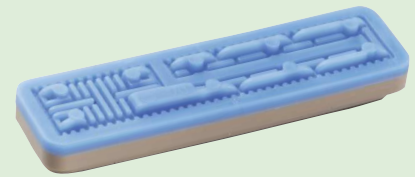


Turf Drip PC AS



Professional landscaping brown dripline for surface and subsurface (SDI) applications. Large and robust dripper pressure compensated (PC), anti-siphon (AS) or non leakage (CNL) using «cascade» labyrinth technology.



Turf Drip PC AS

Applications

- Professional landscaping irrigation, municipalities,
- Surface irrigation
- Subsurface irrigation

Specifications

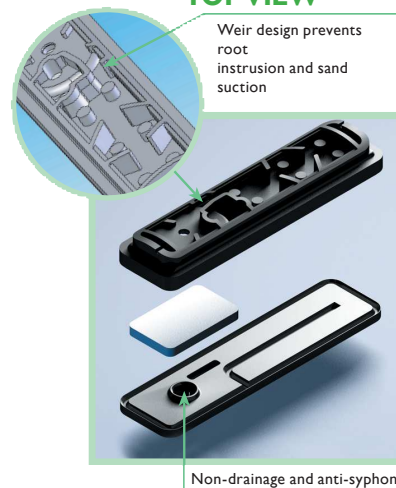
- Pressure compensated dripper
- Dripper with «Cascade» labyrinth to better efficiency against clogging
- Anti siphon dripper (AS) or non leakage dripper (CNL)
- Silicone diaphragm and resistance to chemical
- Strong mechanical root intrusion design
- Large water path for better efficiency on low discharge
- Multiple star water inlets to the dripper
- Excellent packing for easier installation
- Yellow strips for easier positioning

Technical data

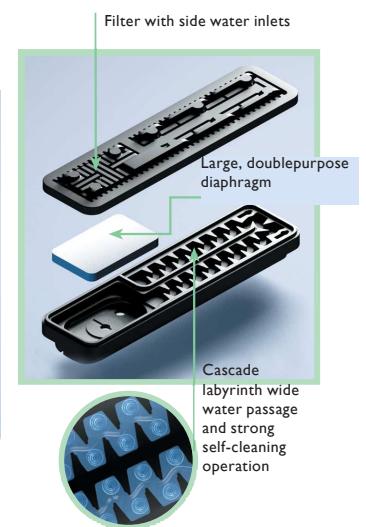
- Available rolls: 100m
- Diameter: 16mm
- Thickness: 1.2mm
- Nominal discharge: 2.2 lph (standard), 1.6 lph
- Recommended pressure: 0.5 to 4.0 bar (CNL 0.8 to 4.0 bar)
- Filtration (130 microns)
- Spacing between drippers: 33cm

Nominal Diameter (mm)	Wall thickness		Ext. Dia. (mm)	Int. Dia. (mm)	Max Pressure (bar)
	(mm)	(mil)			
16	1.15	45	16.20	13.9	4.0

TOP VIEW



BOTTOM VIEW



Head losses table on standard
Turf Drip roll

Turf Drip PCAS 16, 2.0 l/h, Ep. 1.2mm	
Line length (m)	Drippers spacing (m) 0.33
20	0.2
40	1.0
60	2.9
80	6.4
100	11.8
120	19.3
140	25.6

