

GardenDrip PCAS



Gardening brown dripline for surface and subsurface (SDI) applications. Pressure compensated (PC) and anti-siphon (AS) dripper using «cascade» labyrinth technology.



Garden Drip PCAS

Applications

Gardening and landscaping irrigation.

- Surface irrigation
- Subsurface irrigation

Specifications

- Pressure compensated dripper
- Low CV: 3%
- Dripper with «Cascade» labyrinth for clogging resistance
- Mechanical root intrusion design
- Large water path for better efficiency on low discharge
- Multiple water inlets to the dripper
- Excellent packing for easier installation
- Yellow strips for easier positioning

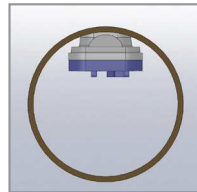
Technical data

- Available rolls: 50m and 100m (standard)
- Diameter: 16mm
- Thickness: 1.2mm
- Nominal discharge: 2.2 lph
- Recommended pressure: 0.5 to 3.0 bar
- Filtration (130 microns)
- Spacing between drippers: 33cm (standard), 40cm, 50cm

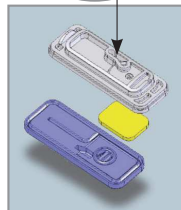
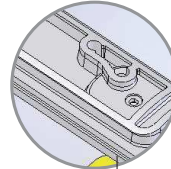
Nominal Diameter (mm)	Wall thickness		Ext. Dia. (mm)	Int. Dia. (mm)	Max Pressure (bar)
	(mm)	(mil)			
16	1.15	45	16.20	13.9	3.0

3 PARTS-UPPERVIEW

Shallow profile reduces head losses
Raised water inlet reduces clogging

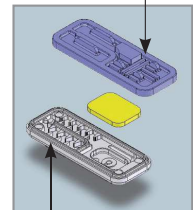
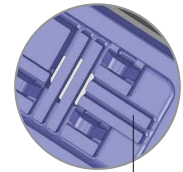


Weir design prevents root intrusion and sand suction

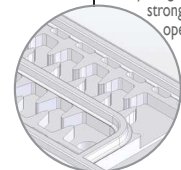


3 PARTS-BOTTOMVIEW

Multi-channel: three-dimensional water inlets and eleven independent entrances



Cascade labyrinth, wide water passages and strong self-cleaning operation



Head losses table on standard Garden Drip roll

Garden Drip PCAS I6, 2.2 l/h, Ep. 1.2mm	
Line length (m)	Drippers spacing (m) 0.33
20	0,1
40	0,7
60	2,2
80	5,1
100	9,8
120	16,4
140	25,7

